

Mastercam 2022



Work with confidence.
Choose Mastercam.



MILL



MULTIAXIS



LATHE



SWISS



MILL-TURN



WIRE



ROUTER



Mastercam for
SOLIDWORKS®



DESIGN

STRENGTH AND STABILITY IN MANUFACTURING

Mastercam is backed by a strong and stable company, supported by the world's largest CAM network. At a time when consolidation in the CAM industry has caused problems for many manufacturers — with questions about what to do with lagging software and where to find support — Mastercam users work with confidence.

With an uncompromising focus on the success of manufacturers using our CAD/CAM software solutions, Mastercam is developed using four strategic touchpoints for strength and stability in manufacturing.

PERFORMANCE

Powerful tools for speedy performance.

Mastercam is easy and intuitive to use but maintains a depth of features to support the most complicated jobs. Our toolpaths are elegant and remarkably efficient.

PRODUCTIVITY

Advanced solutions for manufacturing.

We help connect the largest CAM community worldwide, and our success is a direct result of listening and responding to industry needs for productivity solutions from job setup to job completion.

PARTNERSHIP

Focus and cooperation for innovation.

Our dedication to the manufacturing community drives Mastercam innovation. We collaborate with leading tooling, software, and machine tool manufacturers to develop new technologies.

PROGRESS

Managing resources for better results.

Opportunities to drive down costs and increase profits can be found across the entire shop. Mastercam supports improved use of data-driven manufacturing in the digital age.

WORK WITH CONFIDENCE. CHOOSE MASTERCAM.

**FLEXIBLE LICENSING OPTIONS MAKE IT EASY TO BRING
THE WORLD'S LEADING CAD/CAM SOFTWARE INTO YOUR SHOP.**



Subscription licensing gives you lower up-front costs and renewable, term-based access to Mastercam with steady, predictable payments.



Perpetual licensing is available to operate Mastercam at a lower price over time, to complement long-term planning and budgeting capabilities.



Mastercam Maintenance maximizes your productivity with priority access to the latest software, customer support, and so much more.

MASTERCAM REMAINS STRONG, STABLE, AND INDEPENDENT.

This past year served as a clear reminder of the critical role that manufacturing plays in the global community. Even when the world stops, manufacturing does not. Even when we encounter disruptions of enormous magnitude, our employees, our Resellers, and our customers continue to produce the items that the world relies on. This responsibility is not something we take lightly, and it is why we responded with quick, informed changes to ensure the continuation of this process. It is an honor to be a small part of empowering our community.

To ensure our customers can maintain their momentum and react nimbly to ongoing changes and challenges in the manufacturing sector, we are unwavering in our approach to software development, support, and service. We will continue to listen to our users and respond directly to the needs of industry with software and services that solve the world's manufacturing challenges. You can count on it.

Meghan West
President and CEO, CNC Software, Inc.



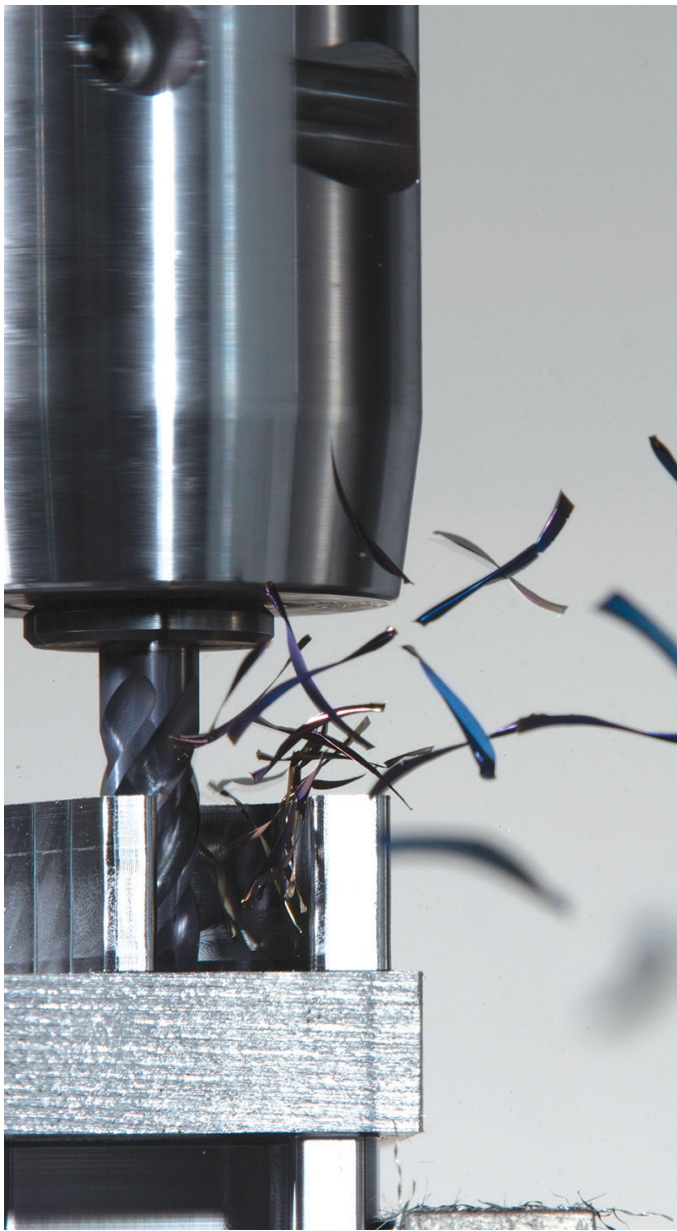
MASTERCAM'S INNOVATIONS FROM START TO FINISHING

DYNAMIC MOTION TECHNOLOGY IS A GAME CHANGER



Dynamic Motion® toolpaths safely maximize material removal rate, reducing cycle times by 25 to 75%. Dynamic Motion uses a proprietary software engine to continually adjust toolpath motion to maintain a constant chip thickness everywhere on the part. The result? Consistent machining performance, shorter cycle times, and longer tool life.

For more details and to see Dynamic Motion in action, visit Mastercam.com/dynamic.



SAVE TIME AND MONEY

100 titanium parts cut with and without Dynamic Motion toolpaths.

WITHOUT DYNAMIC



X

\$100/hour machine cost
= **\$97.31**



\$97.31 per part x 100 parts
= **\$9731**

WITH DYNAMIC



X

\$100/hour machine cost
= **\$53.25**



\$53.25 per part x 100 parts
= **\$5325**

45% reduction in cost

ACCELERATED FINISHING TECHNOLOGY IS REWRITING THE RULE BOOK

Mastercam's Accelerated Finishing® technology is the next leap forward in using today's innovative profile tools and delivering greater efficiency and higher machining productivity. Collaborating with the industry's best tool manufacturers, we take full advantage of these new tool designs to dramatically reduce finishing cycle times while improving surface finish.



For more details and to see Accelerated Finishing in action, visit Mastercam.com/finish.



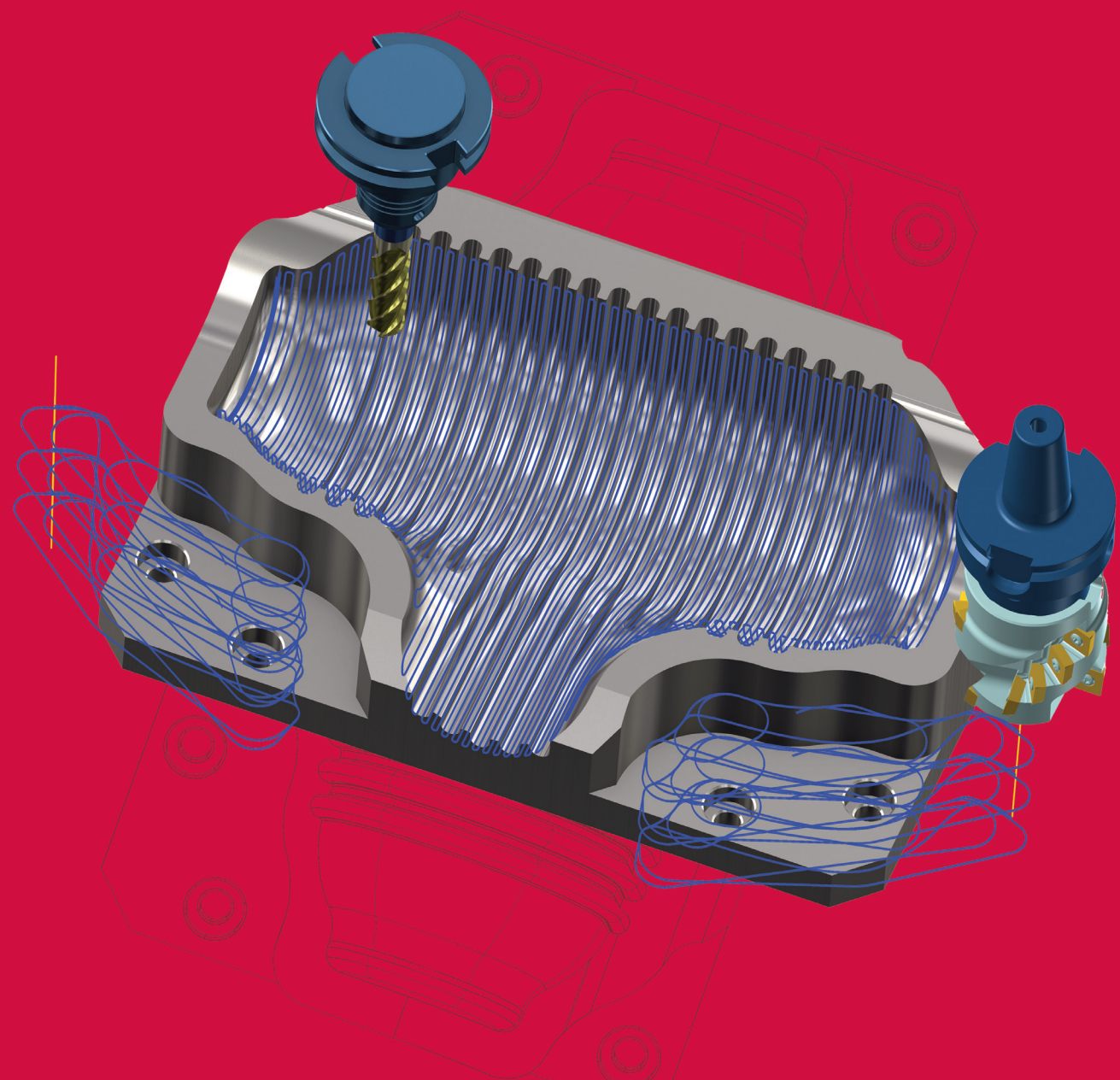
REDUCE CYCLE TIME

"We introduced Accelerated Finishing and a lens-shaped circle segment tool to an aerospace parts sub-contractor who machines aluminum structural parts. Cycle time decreased from 30 minutes to 3.5 minutes per part for an **88% improvement** and a cost savings of \$66 per part. On a 1,000 part production run, it meant a **savings of over \$66,000.**"

Dan Doiron, Product Manager-Milling
Emuge



MILL



Mastercam Mill delivers CAD/CAM power and control with an intuitive programming interface.



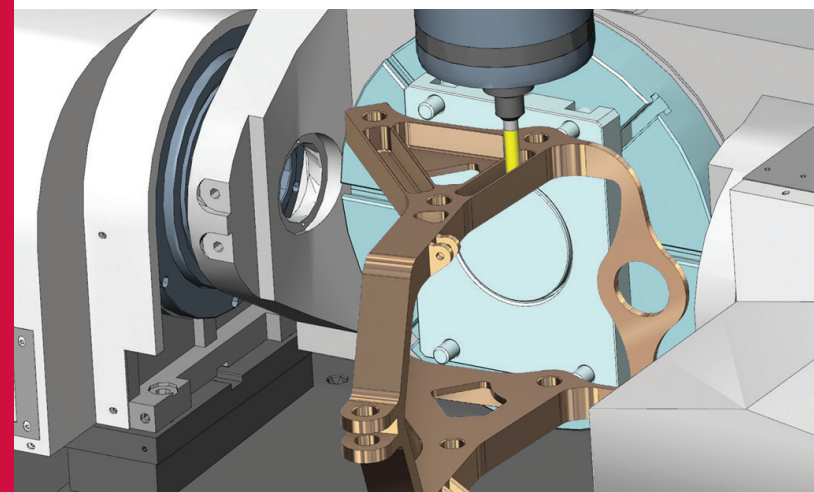
Mastercam Mill includes the option to run a corresponding Mastercam for SOLIDWORKS® environment. Standalone licenses of Mastercam for SOLIDWORKS® Mill and Mill 3D are also available for purchase.

PRECISION AND EFFICIENCY FROM DESIGN THROUGH THE PRODUCTION LINE

Outperform your expectations.

Mastercam gives you the power to drive your CNC equipment with precision and efficiency. You cut parts, not pixels, and our toolpaths help your machines achieve a reliable, efficient, smooth, and accurate motion. Part quality, extended tool life, and repeatability — even the longevity of your machines — are directly related to this motion.

Mastercam Mill has been shop-tested more than any CAM program in the world. You can count on Mastercam for real-world, proven results.



Mastercam's active Stock Model, Toolpath Verification, and Simulation mean increased confidence on every project. Tool library support, including CoroPlus® and MachiningCloud, helps you make tooling decisions fast.

Flexible, expandable, and connected.

Comprehensive toolpath strategies provide multiple approaches for programming any part, regardless of complexity. Modify any element, and toolpaths are updated, eliminating rework.

Build libraries of your favorite machining strategies. Choose customized operations, apply them to your next job, and reduce your programming time. With interfaces to digital tool libraries and other manufacturing software, Mastercam ensures you are ready for the next digital revolution. Fast, easy, productive — the way programming should be.

IT ALL ADDS UP TO SAVINGS

“Dynamic Motion takes all the material away in one simple, continuous, non-stop, uninterrupted cut. Not only does that make better parts faster, because it's not lifting, stopping, and starting again, but it also extends the life of the tool.”

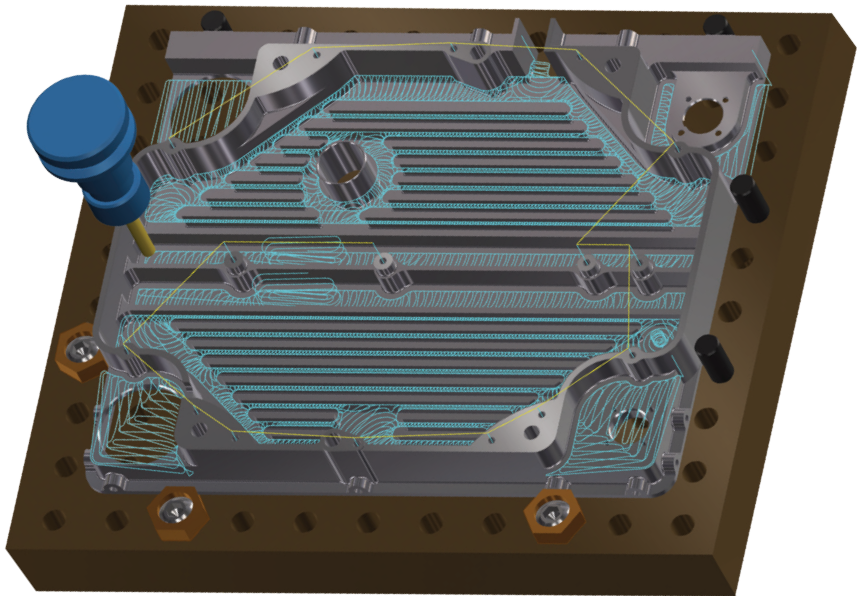
James Nunn, Owner
Machine Nunn

2D MILLING

From simple to complex, Mastercam Mill's 2D machining capability delivers the tools you need to compete.

- **3D power for your 2D parts** — fast, automated 3D Dynamic OptiRough is now included in all Mill products (Entry excluded).
- Feature Based Machining (FBM) automatically programs prismatic solid features like drill holes, contours, and pockets.
- Easy, safe, highly-automated hole making.
- Precision chip control for a wide set of tools, plus specialized tool support including ISCAR®'s **High Efficiency Machining** (HEM) tool set and more.

Dynamic Motion powers much of our 2D solutions. It allows you to maximize your material removal rate to minimize cycle time.



Mastercam's 2D toolpaths deliver easy and optimized pocketing, contouring, drilling, facing, and much more.



The proof of any CAM software is what comes off the machine. Mastercam is crafted to help you get the best possible finish in the shortest amount of time.

3D MILLING

Mastercam provides unsurpassed control on surface cuts, delivering superior finishes and optimized cycle times.

- Mastercam's Dynamic Motion technology powers **dramatically efficient roughing**.
- Constant scallop machining maintains a consistent finish on sloped and flat surfaces.
- Constant-Z rest milling (remachining) identifies and machines areas needing a smaller tool.
- Smart control over motion between cuts for smooth, efficient results.
- **Hybrid finishing** creates a single toolpath that changes cut methods as the slope changes.
- **Pencil tracing** walks a tool along the intersection of surfaces to clean out hard-to-reach areas.

Cut multiple surfaces, solid models, and mesh data — our refined 3D toolpaths give you a smooth, precision finish to please even your toughest customers.

TRIM YOUR PRINT-TO-PART TIMELINE

“For 2D users — those that do a lot of pocketing and contouring — Dynamic OptiRough is a game changer for programming prismatic parts. Previously only available to 3D users, this toolpath lets you rough an entire prismatic solid part fast, in one operation instead of individual roughing, pocketing, and contouring toolpaths. It's an incredible time saver.”

Jesse Trinke, Applications Engineer
Mastercam Manufacturing Lab



Protect your CAD/CAM investment with Mastercam Maintenance. Keep your Milling strategies and technology up to date with ongoing software updates and exclusive Maintenance benefits.

MASTERCAM'S SPECIALIZED ADD-ONS

Often, that one additional CAD or CAM tool makes a specific job easier, faster, and more profitable. If you need very specialized options to precisely match your customer, your workflow, or your products, Mastercam Add-Ons can help.



Port Expert

Create precision engine cylinder head porting toolpaths on surface or solid data, while minimizing unnecessary motion.



Blade Expert

Highly efficient toolpaths for multibladed parts, delivering superior blades, splitters, floors, and fillets.



ProDrill

Automatically detect, group, and apply drill strategies to large amounts of holes, and automatically create tool definitions from existing geometry.



5-Axis Curve Machining and Drilling

A targeted and powerful multiaxis technique that adds extra flexibility to your milling; can be upgraded to the full Multiaxis product.



Mastercam Productivity+™

Brings Renishaw® in-process probing and inspection to your Mastercam programs. Easily set up, validate, and even make in-process adjustments where appropriate.

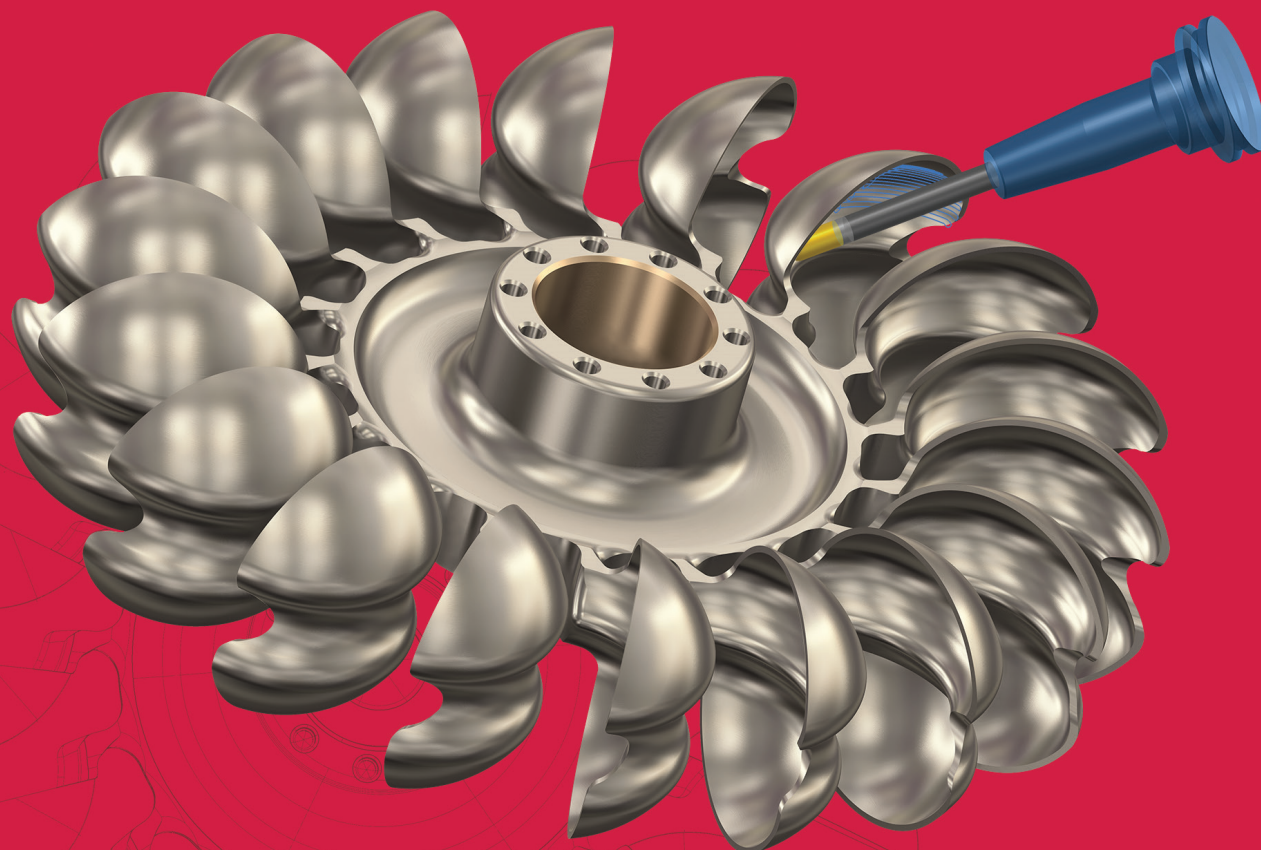


Art

Quickly bring your 2D sketches, clip art, photos, and CAD files to life by crafting them on-screen and cutting them with easy, specialized toolpaths.



MULTIAXIS



Enhance your productivity with Mastercam Multiaxis for intuitive programming of complex parts.

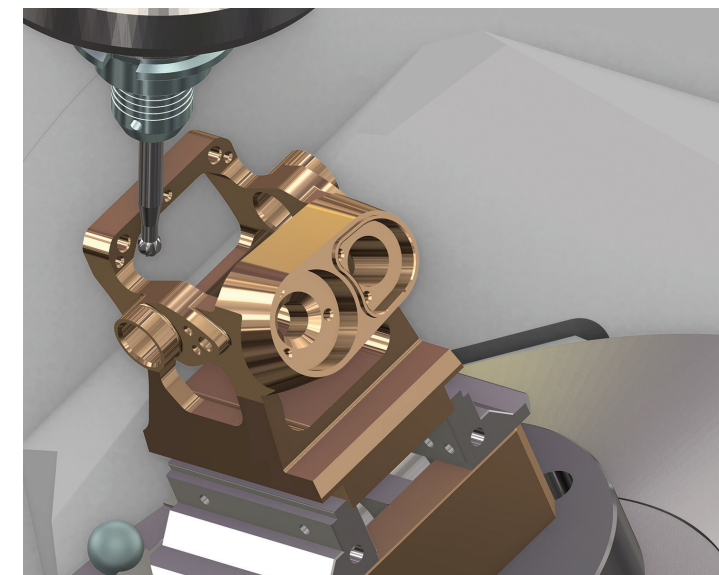
SIMPLIFIED ACCESS TO COMPLEX MACHINING

A practical solution to enhance productivity.

With Mastercam Multiaxis, you have complete control over the three crucial elements of multiaxis machining: cut pattern, tool axis control, and collision avoidance. From 4-axis rotary and roll-die cutting to multiblade impellers with tight internal cuts, Mastercam helps simplify even the most complex jobs with a wide range of multiaxis machining strategies — both basic and advanced — to improve your productivity.

Other highlights include:

- **Multisurface 5-axis** roughing and finishing (including depth cuts), plunge roughing, and flowline machining.
- Power and control of multiple multiaxis cutting strategies from a single interface.
- Automatic 3+2 roughing creates a single multiplane roughing toolpath for an entire part.
- **Advanced gouge and collision detection**, a “safe zone” around the part, and safe linking between operations.
- Fast, simple swarf cutting, 5-axis trimming, and stock-aware drilling.
- Ability to create full 5-axis motion from a **3-axis toolpath**.



From basic 5-axis contours to Dynamic roughing and complex finishing, Mastercam is built to streamline multiaxis programming.

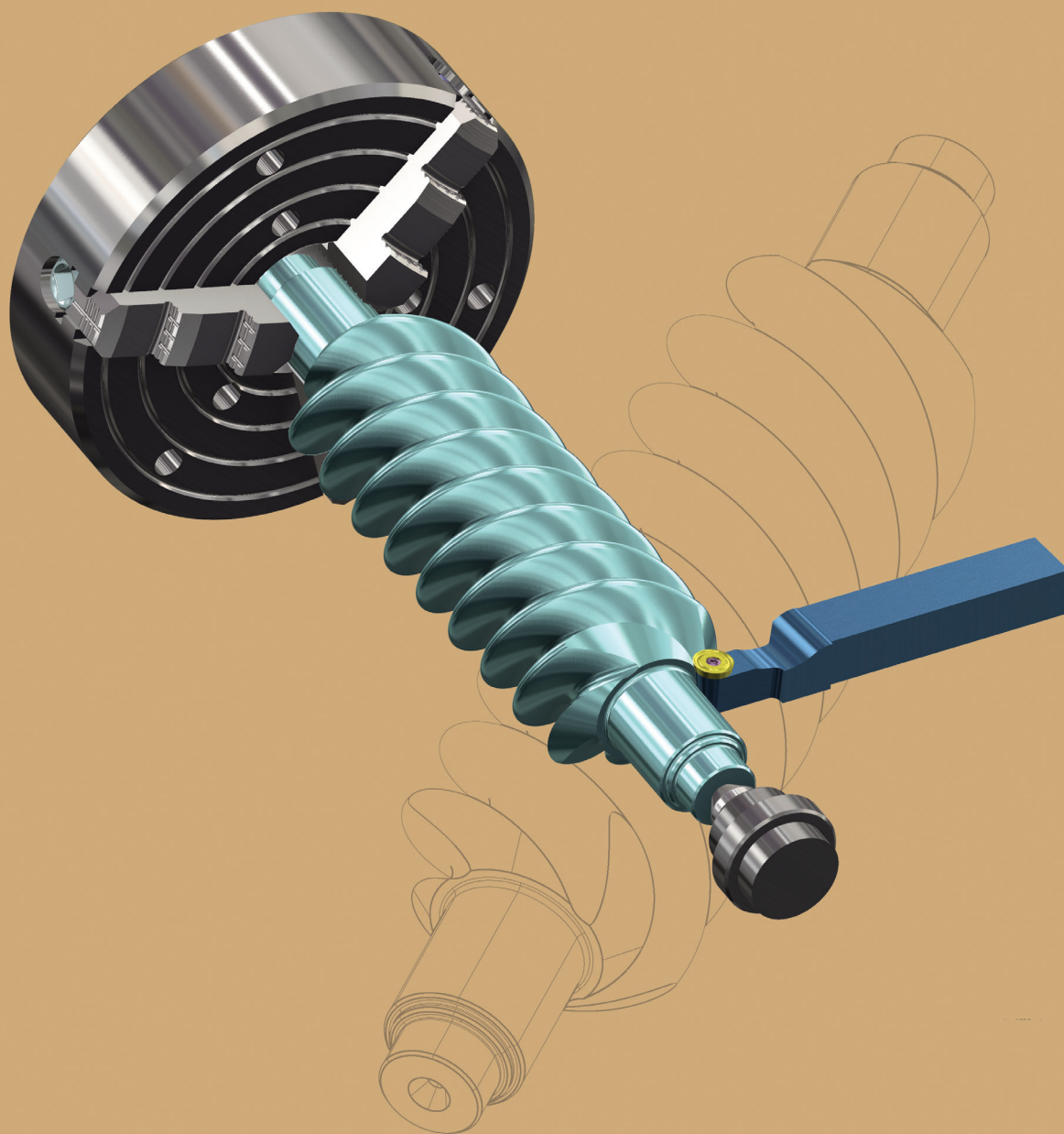
Mastercam Multiaxis provides the next step in productivity for programmers/machinists that have capitalized on the benefits of indexing/positioning in Mastercam Mill, Mastercam Router, and Mastercam for SOLIDWORKS®. Add this solution to your Mastercam license when you are ready to improve your capacity to machine increasingly complex parts on advanced CNC equipment.



Protect your CAD/CAM investment with Mastercam Maintenance. Keep your Multiaxis machining strategies and technology up to date with ongoing software updates and exclusive Maintenance benefits.



LATHE



Mastercam Lathe lets you move the same part file between milling and turning operations with ease and confidence.



Mastercam Lathe includes the option to run a corresponding Mastercam for SOLIDWORKS® environment. Standalone licenses of Mastercam for SOLIDWORKS® Lathe are also available for purchase.

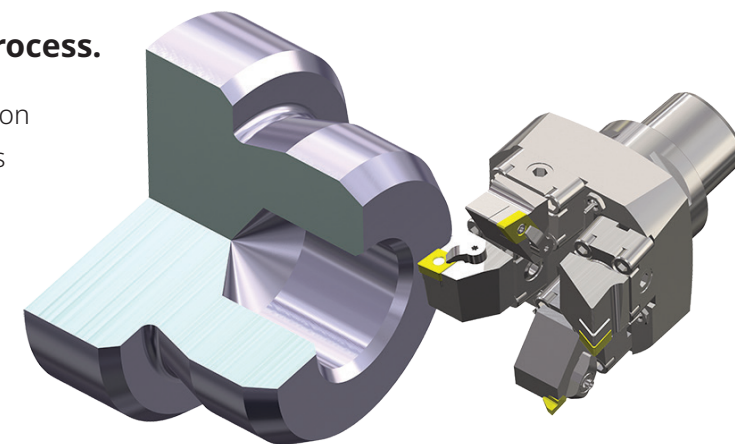
POWERFUL, FLEXIBLE TOOLS FOR TURNING

A set of tools that streamlines your entire process.

From importing CAD files to Dynamic roughing and precision finishing, Mastercam Lathe gives you a variety of strategies to turn parts with greater efficiency and productivity.

Efficient programming, designed for modern manufacturing.

Mastercam Lathe delivers a set of easy-to-use, advanced programming tools, with greatly expanded options when paired with Mastercam Mill. Easy rough, finish, thread, groove, bore, and drill routines combine with C/Y-axis machining to cut any job. Dependable toolpath verification ensures your parts are done right the first time.



Select lathes offer expanded job setup, part transfer, and programming options.

SAVE TIME AND MONEY

100 Hastelloy parts cut with and without Dynamic Motion toolpaths.

WITHOUT DYNAMIC



X

\$100/hour machine cost

= \$500

12.5 inserts per part @ \$25

= \$312.50



\$812.50 per part x 100 parts

= \$81,250

WITH DYNAMIC



X

\$100/hour machine cost

= \$66

1.5 inserts per part @ \$25

= \$37.50



\$103.50 per part x 100 parts

= \$10,350

Cycle time and cost reduction of 87%

Fast, easy turning.

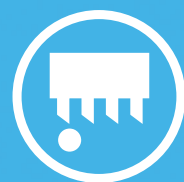
- Program in a few clicks with **Quick Toolpaths**.
- Complete threading including **custom thread forms**.
- Grooving with multiple depth cuts, peck motion, and full-radius plunge turning.
- Intelligent ID, OD, face roughing, and finishing.
- **Full milling support available** for machines with live tooling or C and Y axes.

Safe machine and cut control.

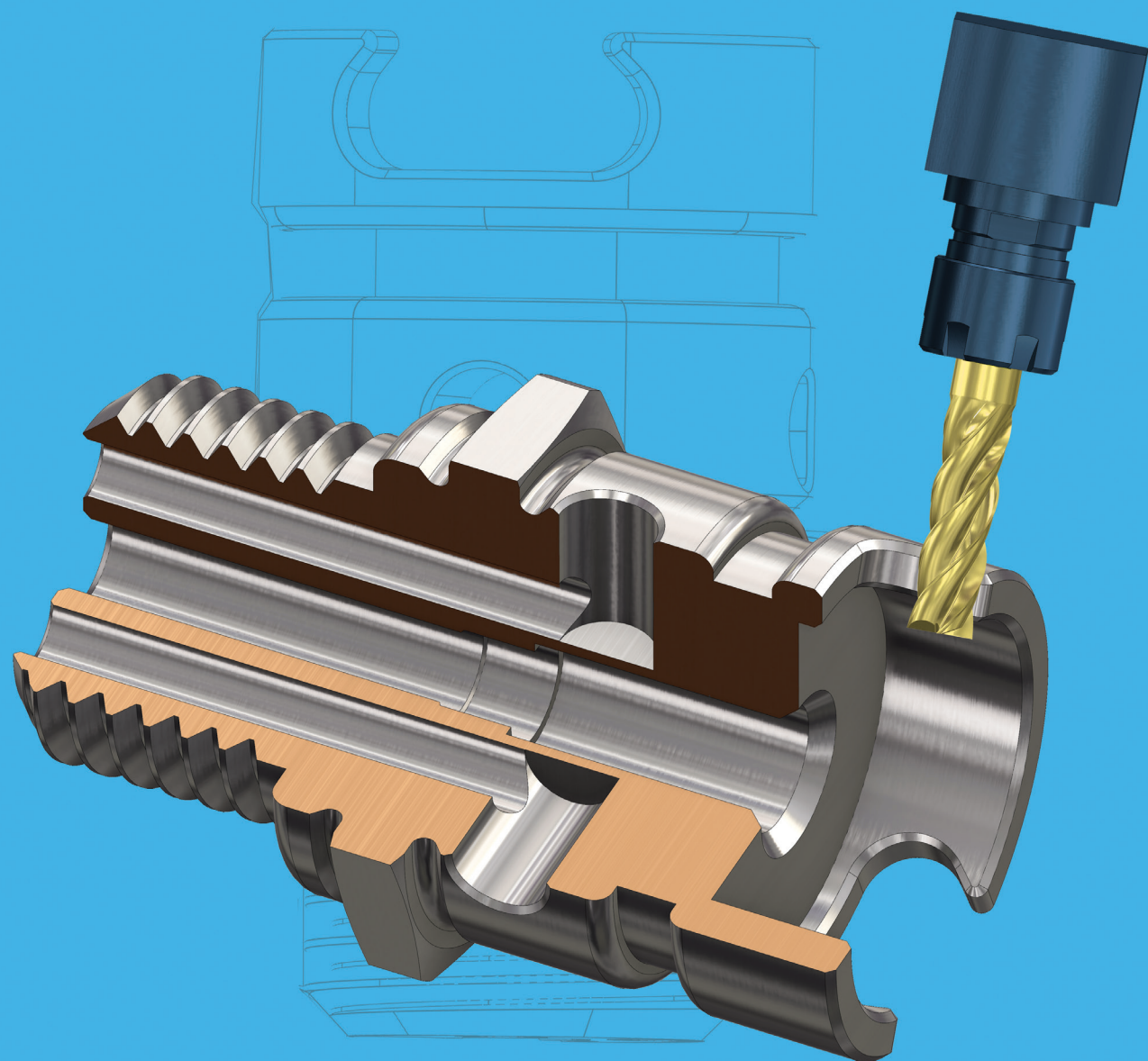
- Chuck, part, steady rest, and tailstock detection.
- Automatic gouge checking on the tool's front and back.
- Control chip breakage on difficult-to-machine materials.
- Full collet and solid jaw support.
- Expanded job setup, part transfer, and programming options on select lathes.



Protect your CAD/CAM investment with Mastercam Maintenance. Keep your turning strategies and technology up to date with ongoing software updates and exclusive Maintenance benefits.



SWISS SOLUTIONS



Use the intuitive Mastercam platform to drive Swiss-style machines with powerful accuracy.

CUSTOMIZED, BUNDLED TECHNOLOGY

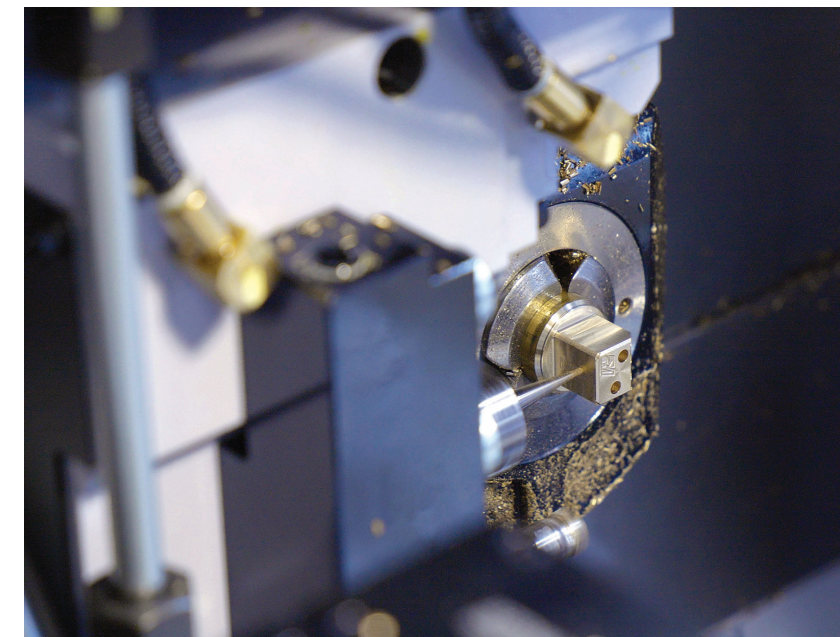
Consolidated software can standardize your shop.

You no longer need a separate software package for Swiss machines — something programmers and machinists appreciate.

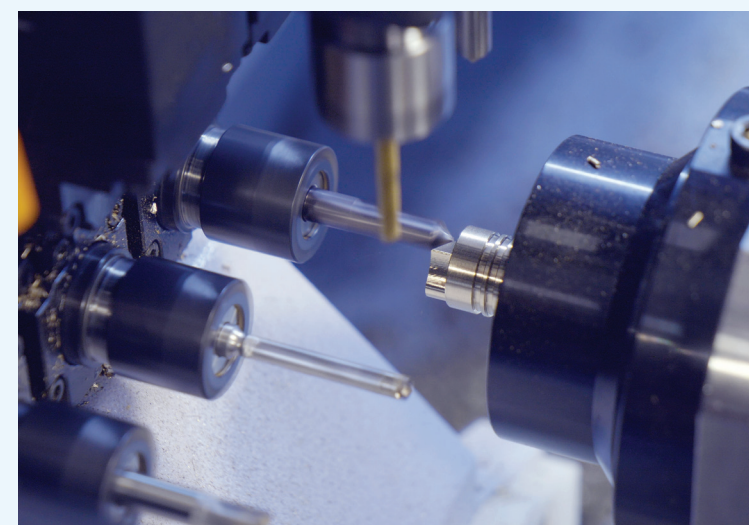
Our Swiss machining solutions combine Mastercam Mill and Mastercam Lathe with specialized post processors. This configuration adds machine-specific controls inside the Mastercam interface, delivering accurate G-code for a wide variety of Swiss machines.

The solution provides customized choices directly within Mastercam for:

- Swiss-style bar feed stock advance.
- Machine-specific setup parameters.
- Swiss-style pick off / cut off strategies.
- Expandable custom machine options including lasers, high-frequency turning, high-pressure coolant, and more.



Mastercam's industry-leading milling and turning power combine to deliver efficient, precise Swiss programming.



Machine-specific options within Mastercam ensure you have precise control and solid code.

Support an array of Swiss machines with the ease of Mastercam.

Mastercam Swiss Solutions cover gang-style machines and limited gang-turret and B-axis machines. Optimized post processors are available for machines from manufacturers including:

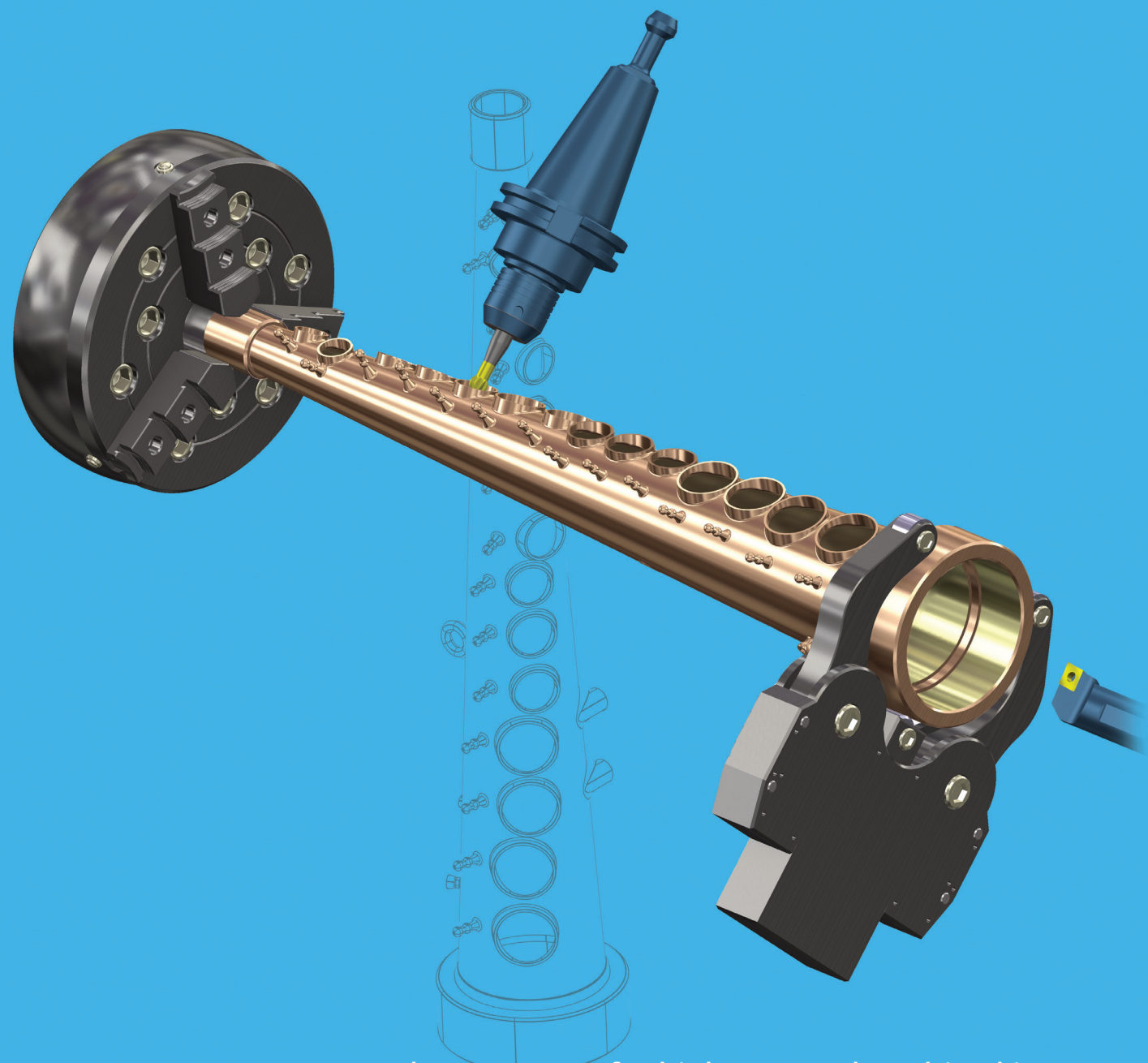
- | | |
|-----------|------------|
| • Star | • DMG MORI |
| • Tsugami | • Hanwha |
| • Citizen | • Ganesh |
| • Swistek | • Nexturn |



Protect your CAD/CAM investment with Mastercam Maintenance. Keep your Swiss strategies and technology up to date with ongoing software updates and exclusive Maintenance benefits.



MILL-TURN



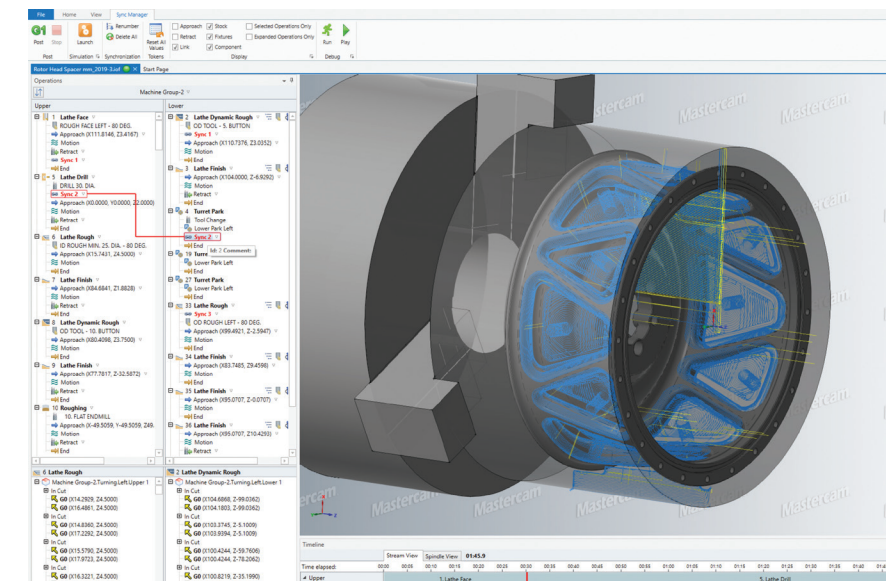
Automate your complex programs for high-powered, multitasking machining centers. Program it right the first time, every time.

STREAMLINED MACHINING CAPABILITIES

Mastercam Mill-Turn simplifies control of high-powered, multistream machining centers.

With Mastercam, your workflow is efficient. Choose your machine, and Mastercam Mill-Turn automates part transfers, tool planes, stock definition, and setup. Then apply your toolpaths, quickly synchronize them, verify your project with simulation, and post your code. Changes along the way are fast and easy — the way programming should be.

Mill-Turn's Sync Manager is a user-friendly way to optimize part cycle times and manage interactions between toolpath operations. Easily navigate a Gantt-style timeline and vertical stream interface to coordinate operations and track cycle times.



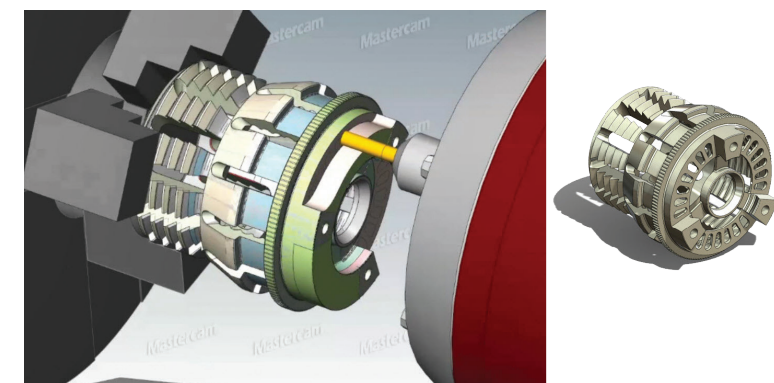
Fast, flexible setup, synchronization, and simulation combine to help you get the most out of your mill-turn machines.

Get more out of your machines with Machine Simulation.

Machine Simulation provides visual verification and assurance that the interaction and syncing between operations performs exactly as you planned. Validate against potential collisions and track cycle time estimates to achieve maximum efficiency.

Avoid mistakes. Save time and money.

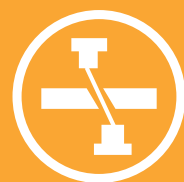
Machine components, custom workholding, steady rests, tailstock, tools, and parts are simulated from the safety of your desktop, ensuring a safe and secure machining experience. You can identify potential collisions, see your cutting motion, and explore ways to optimize your processes with simulation. View all streams and statistics of the entire machining process, with the capability to jump to any point in the process with the click of a button.



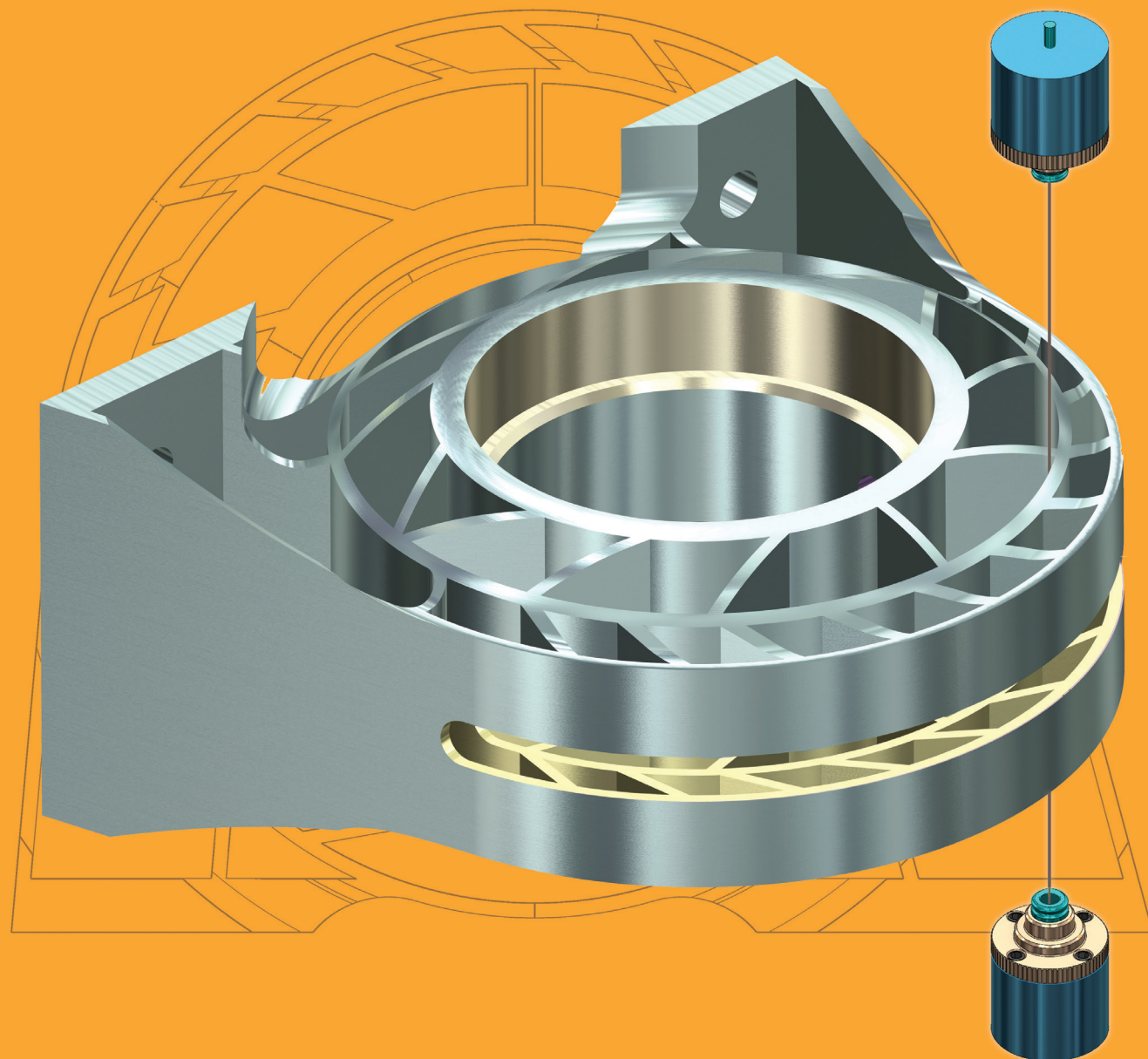
Get the most from your machine with multistation and half-index tool support.



Protect your CAD/CAM investment with Mastercam Maintenance. Keep your Mill-Turn strategies and technology up to date with ongoing software updates and exclusive Maintenance benefits.



WIRE



Mastercam Wire delivers powerful, comprehensive wirepaths in a streamlined, easy-to-use interface.

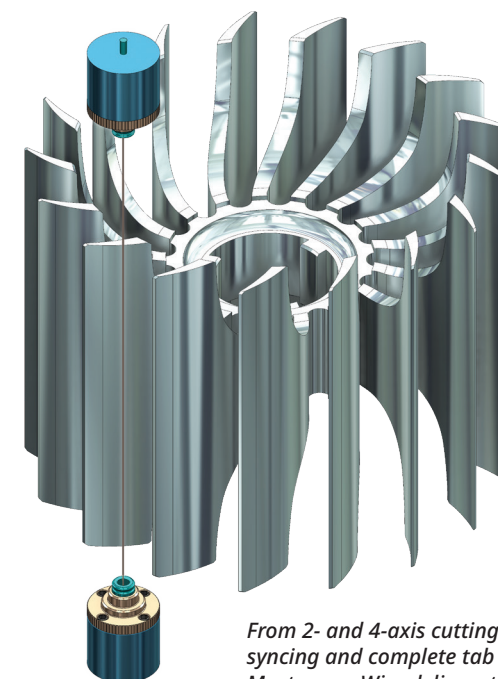
MASTERCAM CONTROL FOR WIRE EDM

Designed for efficiency.

Mastercam Wire lets you move a single part file between machines, saving time and avoiding mistakes. User-customizable wire libraries store power settings and other registers for rough and skim passes.

Other features include:

- Efficient tab creation and management.
- Control settings for corner types and taper angles at any point in the contour.
- Straight or tapered cut from either direction.



From 2- and 4-axis cutting to easy syncing and complete tab control, Mastercam Wire delivers tools for fast, efficient wire programming.



Choosing the best software for your success includes many factors to consider.

A global community of Mastercam users, experts, educators, and enthusiasts helps you get the most from your investment. Mastercam Resellers bring years of experience, helping to ensure that you are getting the most practical and comprehensive support in the industry.

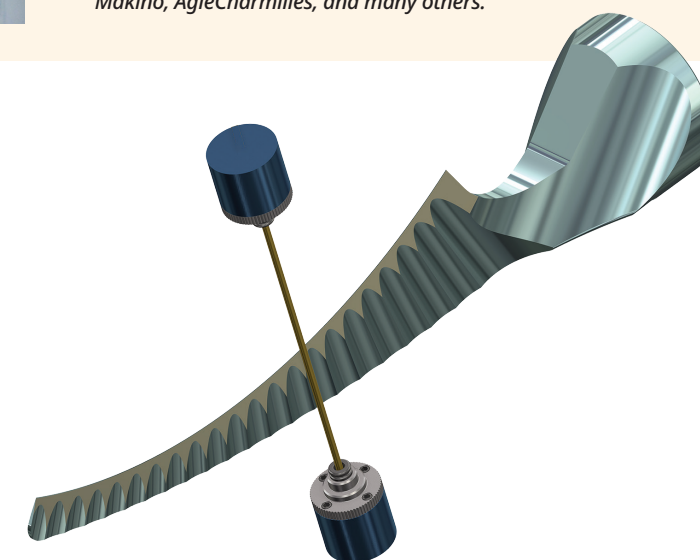
Machine support is available for Mitsubishi, Sodick, Makino, AgieCharmilles, and many others.

Expand your shop's capabilities.

For basic 2-axis contouring and complex 4-axis motion, you can be ready for any job. Mastercam delivers:

- **Contouring** made easy in 2- or 4-axis.
- **Automatic** lead-in and lead-out strategies.
- **Automatic or manual** 4-axis syncing.
- **Automatic** skim and reverse cuts.

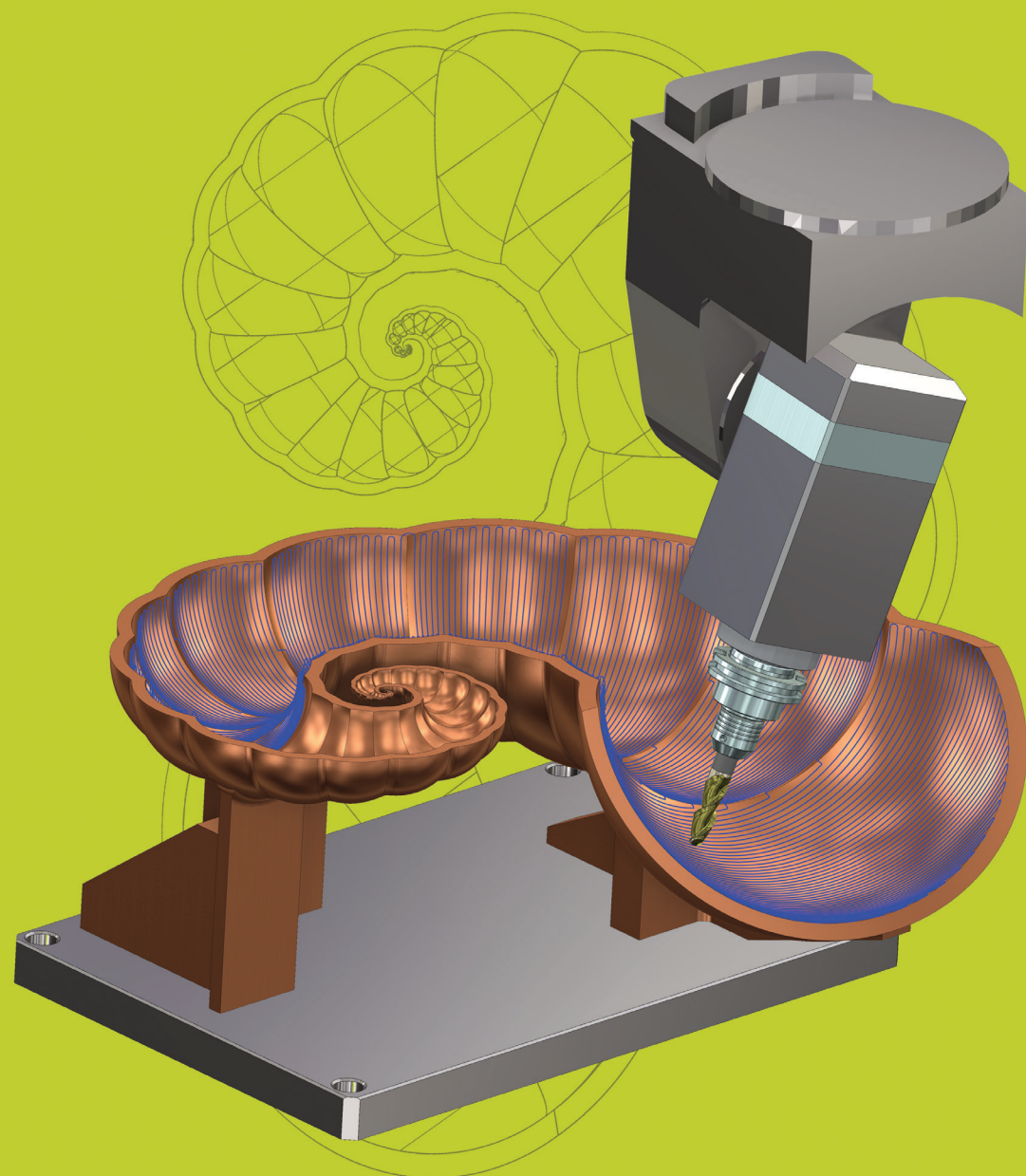
Open virtually any CAD file or use Mastercam's built-in 3D modeling tools.



Protect your CAD/CAM investment with Mastercam Maintenance. Keep your Wire EDM strategies and technology up to date with ongoing software updates and exclusive Maintenance benefits.



ROUTER



Mastercam Router delivers complex routing functionality from an easy-to-use interface.



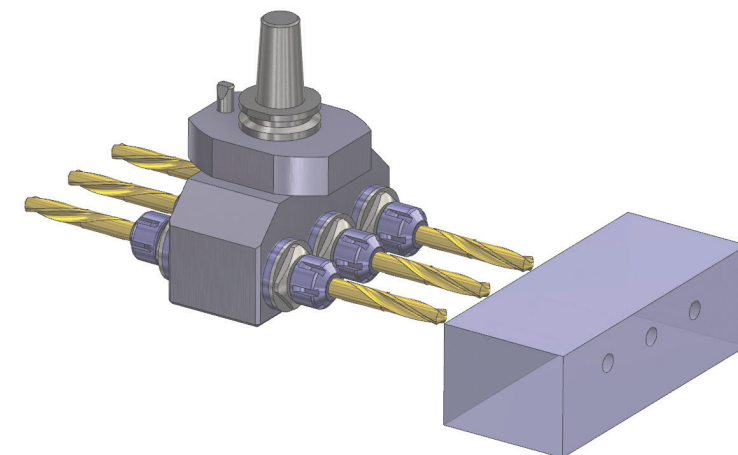
Mastercam Router and Router 3D include the option to run a corresponding Mastercam for SOLIDWORKS® environment.

FLEXIBILITY AND CONTROL

Mastercam Router offers solutions for all your 2D, 3D, or multiaxis challenges — from wood to composites.

Once you program a part, no matter how complex, you can modify any element of the job and get updated toolpaths without slowing down. You can also build a library of your favorite machining strategies and apply them to new models.

Mastercam's powerful Dynamic Motion technology not only helps extend tool life and reduce machine wear, but helps eliminate tool dwell damage as well. **Automatic Toolpathing (ATP)** brings in parts from today's top design packages to help speed flat panel work.



Mastercam Router streamlines multiple tool programming including block drills and aggregate heads.

A comprehensive package of powerful tools.

2D machining can range from simple to very complex. Mastercam Router delivers powerful 2D tools from nesting, contouring, pocketing, and drilling to automated, feature-based, solid model programming.

For 3D machining, Mastercam Router gives you streamlined, efficient 3D roughing and finishing, including automated leftover stock cleanup.

Mastercam's multiaxis capabilities give you complete control over the three crucial elements of multiaxis machining: cut pattern, tool axis control, and collision avoidance.



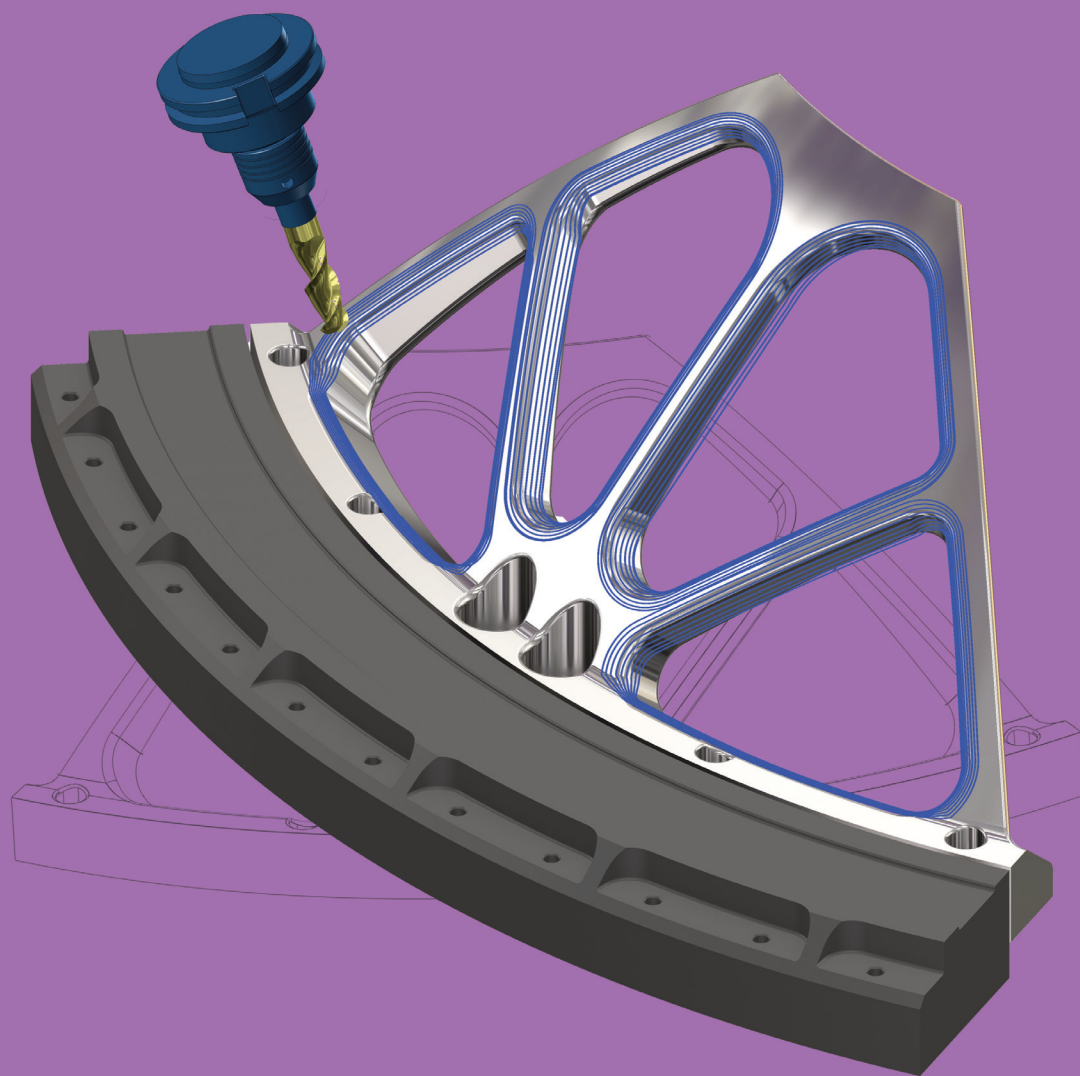
Part and toolpath nesting increase project yields and profitability.



Protect your CAD/CAM investment with Mastercam Maintenance. Keep your Routing strategies and technology up to date with ongoing software updates and exclusive Maintenance benefits.



MASTERCAM for SOLIDWORKS®



Mastercam for SOLIDWORKS® combines the world's leading modeling software with the world's most widely used CAM software.



Mastercam Mill, Mill 3D, Lathe, Router, and Router 3D **include** the option to run a corresponding Mastercam for SOLIDWORKS® environment. **Standalone** licenses of Mastercam for SOLIDWORKS® Mill, Mill 3D, and Lathe products are also available for purchase.

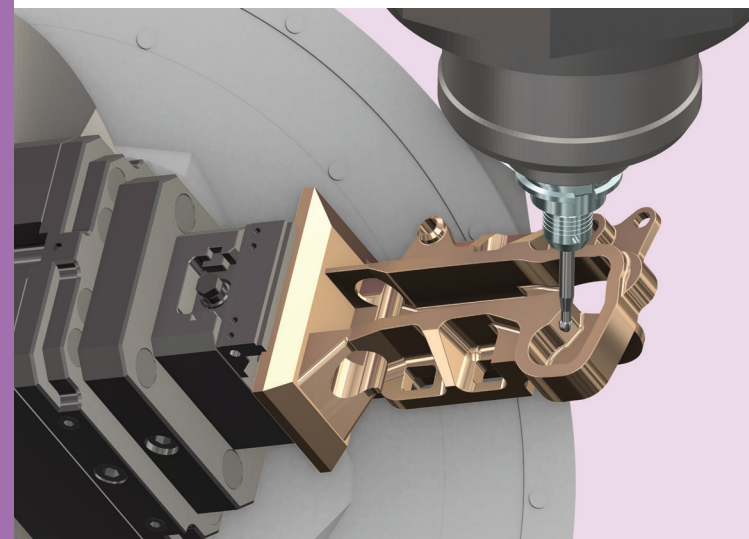
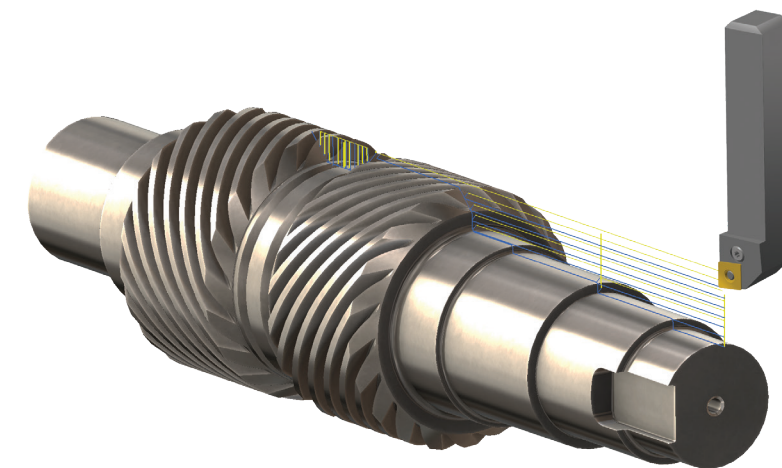
SOLIDWORKS USERS FEEL AT EASE WITH MASTERCAM

Design parts and drive your router, mill, or lathe, with ease and precision for 2D, 3D, and multiaxis machining.



With Mastercam toolpaths integrated directly within the SOLIDWORKS environment, the toolpaths are applied directly to the part or assembly. Intelligent use of design tables and multiple configurations automates family of part programming.

As a Certified Gold Product, Mastercam for SOLIDWORKS delivers the absolute best in 2- through 5-axis milling, routing, and turning CAD/CAM integration.



Mastercam's active Stock Model, Toolpath Verification, and Simulation mean increased confidence on every project. Tool library support, including CoroPlus® and MachiningCloud, helps you make tooling decisions fast.



Protect your CAD/CAM investment with Mastercam Maintenance. Keep your machining strategies and technology up to date with ongoing software updates and exclusive Maintenance benefits.

Flexible and expandable.

No matter how complex a part, with toolpath associativity, any modification to the job means the toolpaths are updated immediately. You can also build a library of your favorite machining strategies, apply them to a part, and Mastercam helps adapt them to the new model. Because Mastercam for SOLIDWORKS is a fully integrated SOLIDWORKS Certified Gold Product, it's fast, easy, and productive — the way programming should be.

SAVE TIME

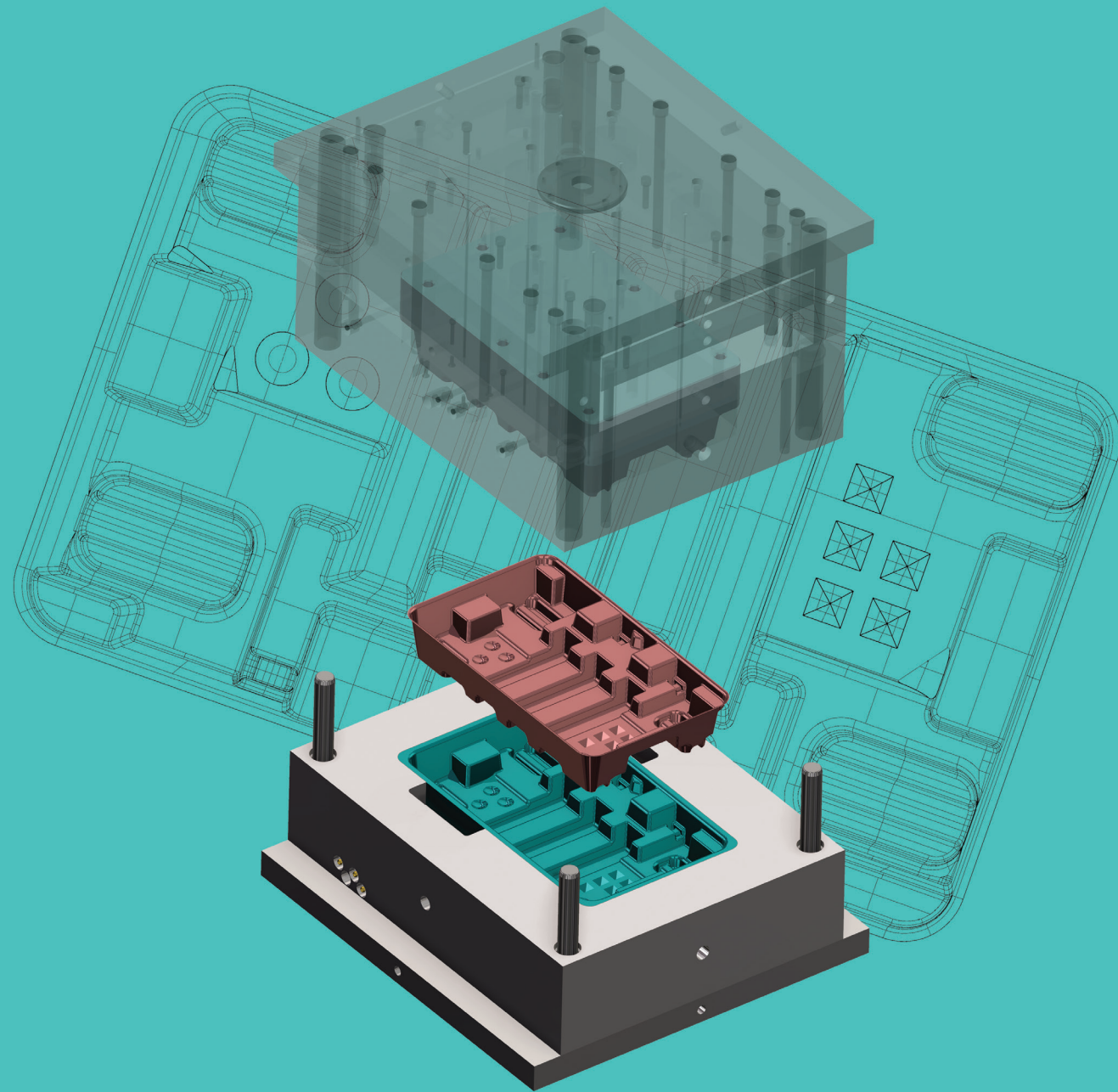
"Mastercam for SOLIDWORKS is making my job easier. I've been using Dynamic toolpaths to get better finishes. It works so well that I'm getting work done in half the time."

Nolan Farmer, Owner
Farmer Plastics & Machining, Inc.

For more information, see the pages about Mastercam Mill, Mastercam Router, and Mastercam Lathe.



DESIGN



Focused CAD means machine-ready parts faster.

MODELING AND PREP TOOLS

Get your parts on and off the machine quickly.

Whether you bring in a file from an outside CAD package or design one yourself, Mastercam's powerful, easy-to-use CAD engine gives you control over the final details of even the most complex jobs.



Quickly and easily separate and program solid assemblies.

Work with your existing CAD files.

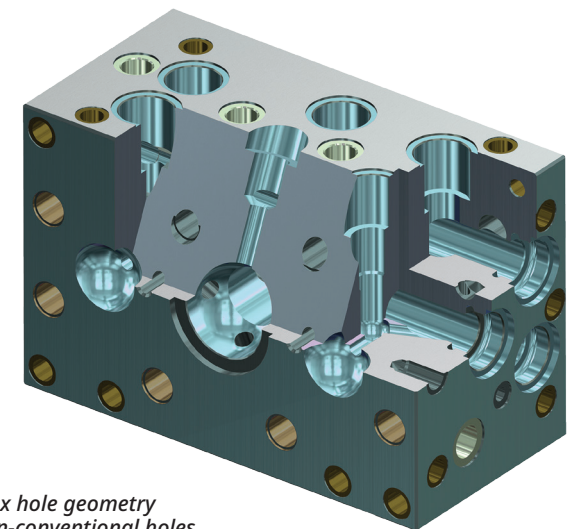
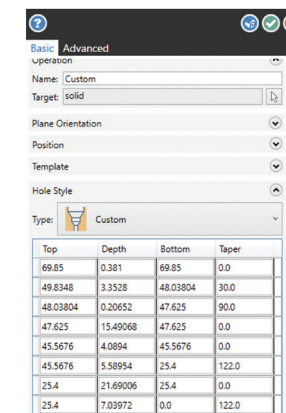
Mastercam helps to preserve design intent with Model Based Definition (MBD) support and acceptance of varied file formats. These include IGES, Parasolid®, SAT (ACIS solids), AutoCAD® (DXF, DWG, and Inventor™ files), SOLIDWORKS® (including history tree), Solid Edge®, SpaceClaim, STEP, STL, and more. Add-On translators are available for Siemens NX, CATIA™, Pro/E (PTC Creo), and more.

Whether you are prepping customer files...

Getting a part file from an outside source can pose unique challenges. You might need to repair a surface, cap or hide a feature, or create an electrode. You may need to streamline, fix, or modify a complex mesh, or just make sure your fixtures are represented on the part. Mastercam includes a powerful set of model prep tools to make sure the process goes smoothly. Focused mesh, surface, and solid model creation and editing tools let you bring a part from the designer's desk to your machining process, fast.

...or designing your parts from scratch.

Having powerful CAD at your fingertips makes your CAM system that much more effective. Mastercam includes a robust set of modeling tools, from complete wireframe to surface and solid modeling. A true hybrid modeling system, Mastercam lets you create, combine, and machine whichever CAD geometry suits your needs.



Automatically identify complex hole geometry including intersecting and non-conventional holes.



Protect your CAD/CAM investment with Mastercam Maintenance. Keep your Design strategies and technology up to date with ongoing software updates and exclusive Maintenance benefits.



EDUCATIONAL SUITE

Mastercam empowers students with the CAD/CAM skills they need for successful careers in manufacturing.

FROM THE CLASSROOM TO THE PRODUCTION FLOOR

Shape the future. Teach with Mastercam.

The Mastercam Educational Suite gives teachers the power to put the world's #1 CAM software at students' fingertips, because your students deserve the best.

Our Educational Suite* comes complete with the following:



Every classroom and program is different.

Mastercam gives you the power to customize solutions to the unique requirements of your curriculum.

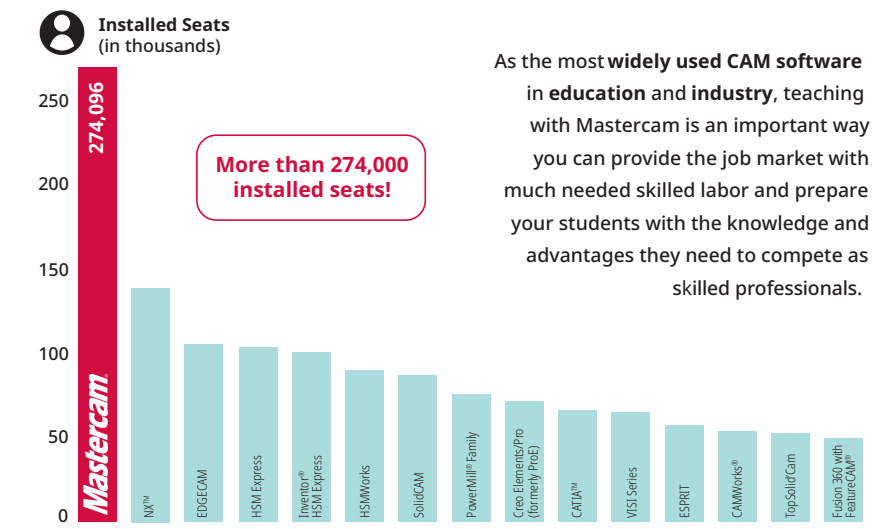
Mastercam Add-Ons available for specialty manufacturing include:



PREPARE YOUR STUDENTS TO SHAPE THE FUTURE OF MANUFACTURING

- **One-stop solution** offering CAD, milling, turning, wire EDM, and more.
- **Easy to teach** and easy to learn with a simplified user interface option — great for new users.
- Trusted platform with **30+ years** of direct service to educators.
- **Technological leadership** gives students access to tools used in professional shops.
- **Free resources** for teachers and students include Mastercam Demo/ Home Learning Edition.
- **Open platform** lets you design in Mastercam or use CAD files from other sources.

The World Leader in NC Programming



User Support

Mastercam Resellers form a much needed conduit between education and industry. Teachers and students gain direct access to our industrial channels' deep knowledge of CAD/CAM and manufacturing options. And when students are ready for the job market, they benefit as members of the world's largest industrial CAM network.

Mastercam Educators Alliance

The Mastercam Educators Alliance (MEA) is a growing community of educators who teach and use Mastercam. It provides a platform to interact with other instructors and gain access to subject matter experts and content that is tailored to the needs of MEA members.

Student Outreach

Mastercam is dedicated to future generations of makers. We are strong supporters of a number of motivational competitions for students.



*Solutions in the Mastercam Educational Suite provide the same interface and capability to drive CNC equipment as industrial versions, but files are saved in a format that is not compatible with industrial versions of Mastercam.

CONNECTED CAM FOR A CONNECTED WORLD



Our success is a direct result of staying connected to our customer base, our partner network, and manufacturing-at-large. We collaborate across industry and education to adapt to changing needs and ensure you have ample access to the technology and skilled labor force required to improve manufacturing outcomes.

Like you, we are using data to make faster, better decisions, reduce bottlenecks, and solve problems.

Mastercam leverages an open platform and premier partnerships to give our users access to everything from paperless workflow and reverse engineering to digital tool management and robotics — and incomparable customer support.

TOOLS TO KEEP YOURSELF COMPETITIVE



Mastercam University®

Online, video-based training developed by Mastercam and trusted partners. Sharpen your skills on your own schedule, use it to bolster your resume, and access the materials you need for Mastercam Certification. Mastercam University is easy to use, gives you real-world training applications, and covers all levels of Mastercam skills from basic to advanced.

University.Mastercam.com



Mastercam Certification

If you are looking to set yourself apart as a skilled Mastercam programmer in the increasingly competitive job market, Mastercam Certification is the answer. Your path to Mastercam Certification begins at Mastercam University. With certified Mastercam credentials, you can advance your programming skills and earn the competitive advantage you seek.



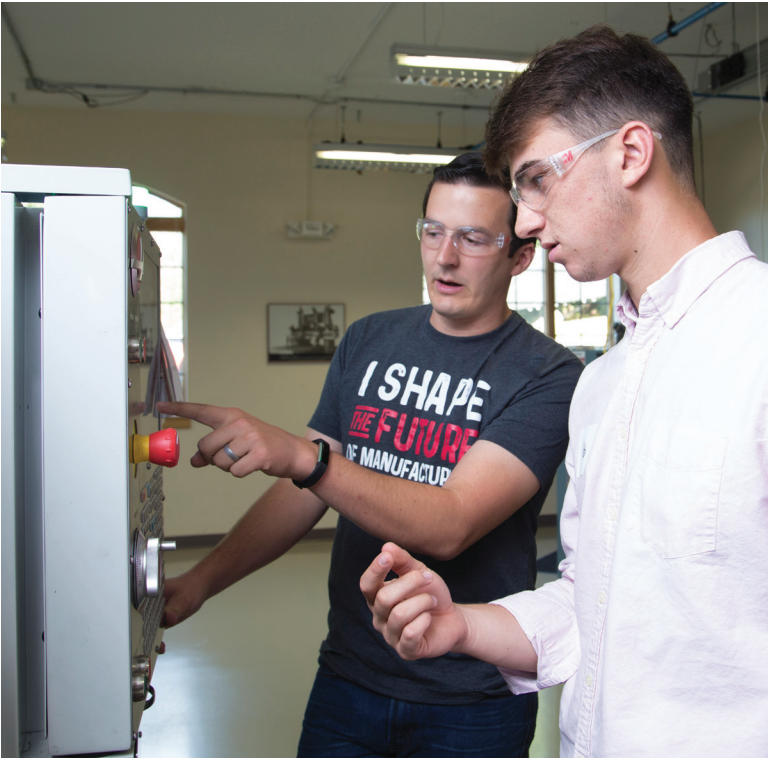
Mastercam Training and Support

CAD/CAM is a support-intensive business. We understand that our users require comprehensive training options to get started with Mastercam and then to stay current with the latest advancements.

To get the best training, you need flexible options, and the strength of the Mastercam community means our users have access to a global network of excellent opportunities for training.

Corporate Training

- Mastercam University offers online training courses with video-based instruction in a variety of CAD/CAM disciplines.
- Live, virtual training sessions offered throughout the year from our corporate offices.
- PDF tutorials and the Mastercam Knowledge Base are accessible with your [Mastercam.com](https://www.mastercam.com) account.



Mastercam Reseller Training

- Your local Reseller is the best place to find out about training opportunities using the world's most widely used CAM software. Mastercam Resellers can help you access onsite, classroom, and virtual trainings for everything from standard skills tutorials to customized CAD/CAM workshops for the specific needs of your manufacturing enterprise.

Third-Party Training

- As the most widely used CAM software, Mastercam users also enjoy access to a variety of training options available from official, third-party training partners.

THE CHOICE IS YOURS

When you choose Mastercam, you get more than a license to run CAD/CAM software. You secure flexible options to empower your business and manufacturing operations — with the added value of shop-tested technology, responsive support, and a voice to guide future CAD/CAM developments.

FOR A MANUFACTURING SOLUTION THAT WORKS FOR YOU, CHOOSE MASTERCAM.



Trusted software and the world's largest CAM network give you the power to advance your manufacturing at a pace that works for you.



Perpetual licensing is available to operate Mastercam at a lower price over time, to complement long-term planning and budgeting capabilities.



Subscription licensing gives you lower up-front costs and renewable, term-based access to Mastercam with steady, predictable payments.



Mastercam Maintenance maximizes your productivity with priority access to the latest software, customer support, and so much more.

CONTACT YOUR LOCAL MASTERCAM REPRESENTATIVE TO MAKE YOUR CAD/CAM CHOICE TODAY.

For more information,
find a local Mastercam expert at
[Mastercam.com/Resellers](https://www.mastercam.com/Resellers)

About Us

CNC Software, Inc. provides state-of-the-art software tools for CAD/CAM manufacturing markets. Our single focus is to provide superior software products based on our users' needs to solve simple to complex design and machining problems.

CNC Software, Inc.
671 Old Post Road
Tolland, CT USA 06084



www.mastercam.com

Mastercam[®]

Mastercam[®] is a registered trademark of CNC Software, Inc. SOLIDWORKS is a registered trademark of Dassault Systèmes Solidworks Corp. All other trademarks are property of their respective owners. ©1983-2021. All rights reserved.