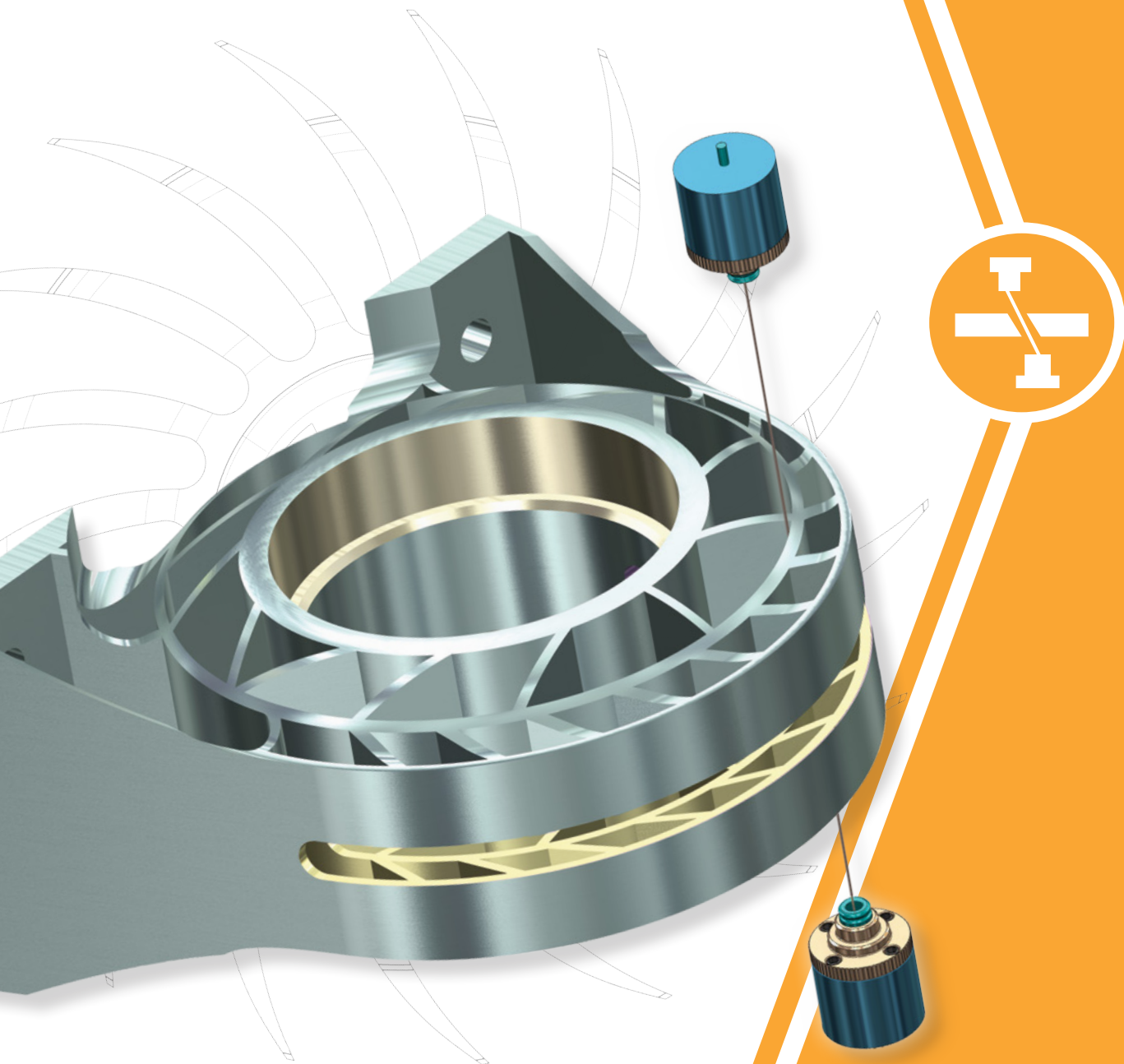


# **Mastercam**<sup>®</sup>

## **WIRE**

Mastercam Wire delivers powerful, comprehensive wirepaths in a streamlined, easy-to-use interface.



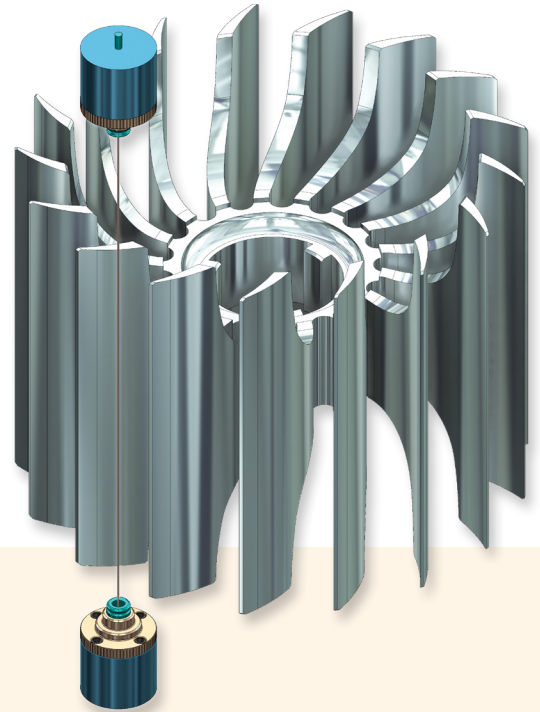
# MASTERCAM CONTROL FOR WIRE EDM

## Designed for efficiency.

Mastercam Wire lets you move a single part file between machines, saving time and avoiding mistakes. User-customizable wire libraries store power settings and other registers for rough and skim passes.

Other features include:

- Efficient tab creation and management.
- Control settings for corner types and taper angles at any point in the contour.
- Straight or tapered cut from either direction.



## Choosing the best software for your success includes many factors to consider

A global community of Mastercam users, experts, educators, and enthusiasts helps you get the most from your investment. Mastercam Channel Partners bring years of experience, helping to ensure that you are getting the most practical and comprehensive support in the industry.



## Expand your shop's capabilities.

For basic 2-axis contouring and complex 4-axis motion, you can be ready for any job. Mastercam delivers:

- **Contouring** made easy in 2- or 4-axis.
- **Automatic** lead-in and lead-out strategies.
- **Automatic or manual** 4-axis syncing.
- **Automatic** skim and reverse cuts.

Open virtually any CAD file or use Mastercam's built-in 3D modeling tools.

To learn more about Mastercam's Wire solutions, visit [mastercam.com/wire](https://mastercam.com/wire).