

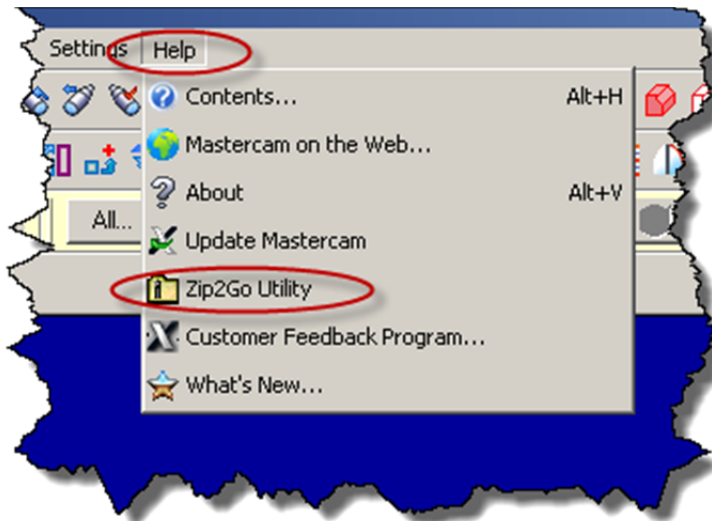


19136 S. Molalla Avenue
Oregon City, OR 97045
P: 503.653.5332
F: 503.653.4887
www.mcamnw.com

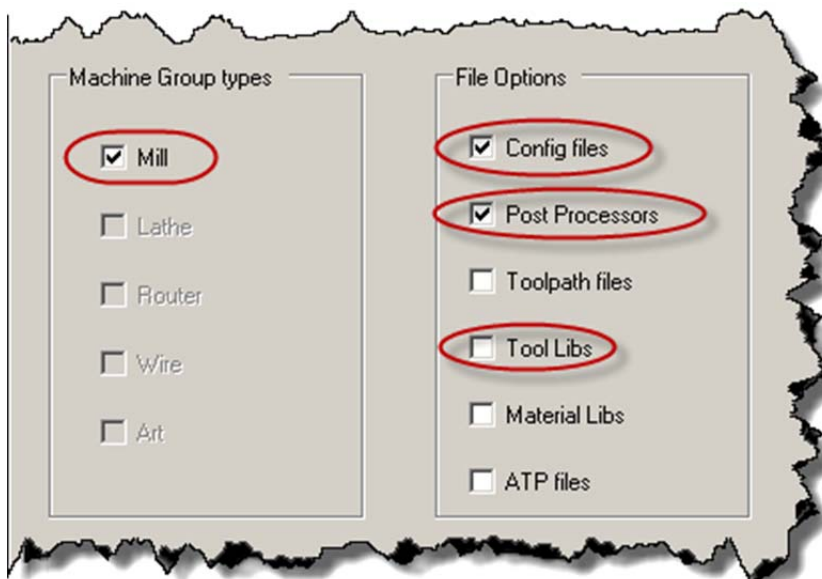
Providing design and manufacturing software solutions for the Northwest.

How to Create a Zip2Go file to Send to MCAM Northwest

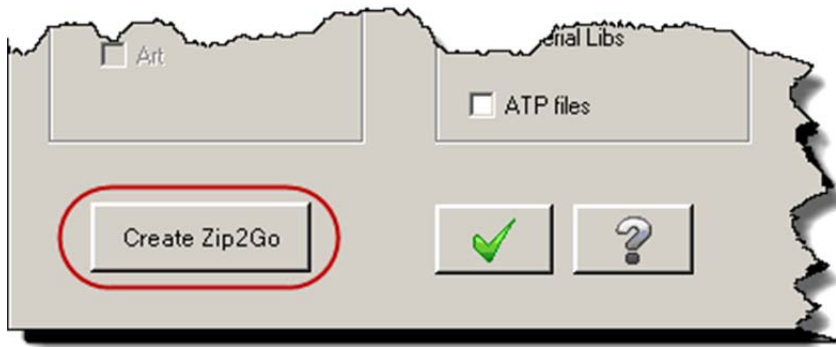
1. In Mastercam, open the part file you want to send us, with the correct machine or machines selected.
2. Click on “Help” > “Zip2Go Utility”:



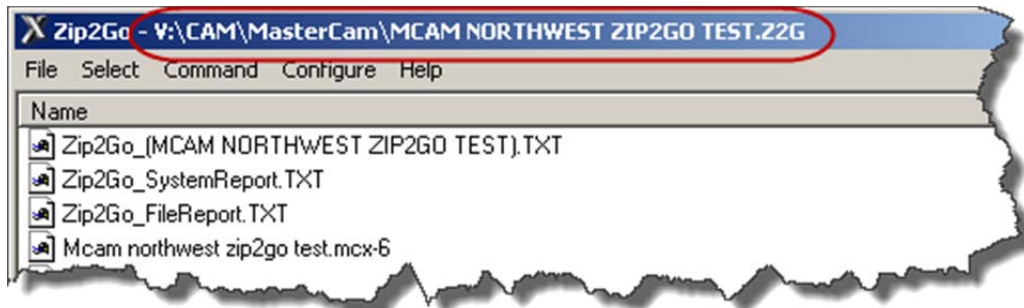
3. Select all machines available in the “Machine Groups types” box. Select at least the options shown in the “File Options” box below:



- Click the "Create Zip2Go" button:



- Leaving Zip2Go open, open your email client and attach the file shown at the top of the Zip2Go dialog to the email:



- Confirm the correct file is attached to the email, and send it to us.
- Exit the Zip2Go Utility.
- If you have any questions please contact us at support@mcamnw.com